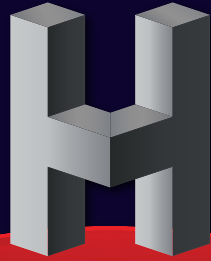
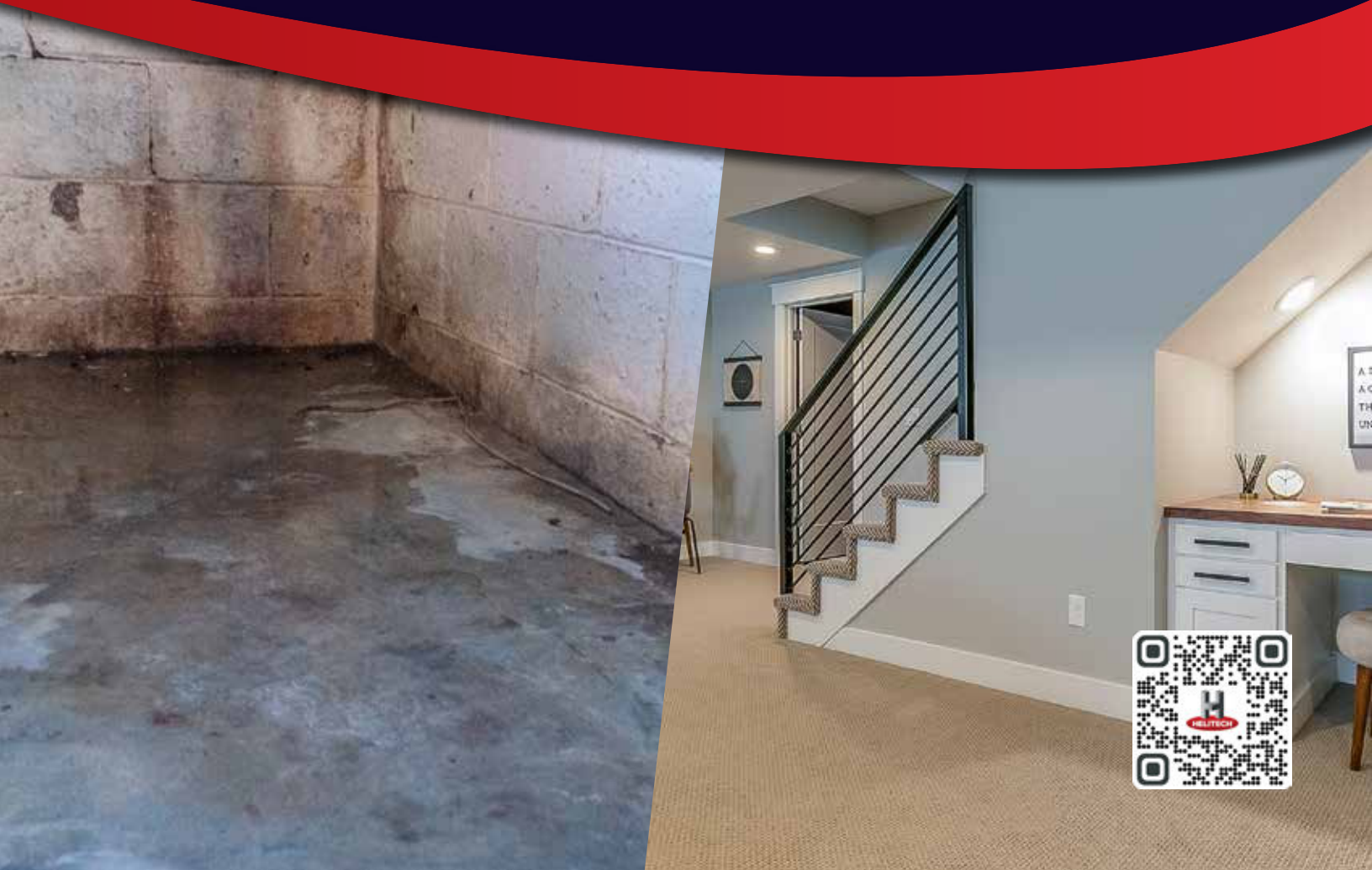


Waterproofing System



HELITECH[®]

Waterproofing &
Foundation Repair



Drainage System Options

50%

More than half of the air in your living space comes from the crawl space.

HydraDry+[®]

HydraDry+ from Helitech is the world's fastest waterproofing system on the market today. It is a patented system that removes up to 70% more water than conventional rock and pipe "drain-tile" systems and never clogs!

The bridging material captures water at the foundation's weakest point — where the footing, the wall, and the floor meet.



HydraDry[®]

In certain circumstances in areas with minor hydrostatic pressure and floor cracking, we offer the HydraDry Standard System as an economic waterproofing solution.

By installing the HydraDry horizontally on the footing, this reduces digging and concrete removal. Using this process may reduce labor costs up to 20%.



HydraDry[®] CS

HydraDry is also installed in Crawl Spaces to help direct any incoming water into the sump pit and pump, then out of your home.




Installation Steps

Shown are the HydraDry+ Basement System Steps. The Standard and Crawl Space installations are slightly different.

1. Our certified installer removes a small section of the floor in the impacted area.




2. Small weep holes are cored beneath the floor slab to release hydrostatic pressure (block walls only).



3. The HydraDry+® System is installed next to and on top of the footing.



4. Removed section of the concrete floor is repoured to original thickness, ensuring its structural integrity.



5. The sump pit and pump is installed and connected to a discharge line to carry water away from your home's foundation.

Super Sump Pump Options

Captures water from the HydraDry® System and routes it through drain pipes to the outside and away from the home.

System Name	# of Pumps	Contains	Total GPM	Pit Size	Used For
S1	1	1/3 HP Sump Pump (58 GPM)	58	17 x 24"	Mostly used for Crawl Spaces
S2	2	1/3 HP Sump Pump (58 GPM) + Battery Backup (46 GPM)	104	17 x 30"	Minimum Recommended for Basements
S3	3	1/3 HP Sump Pump (58 GPM) + Battery Backup (46 GPM) + Secondary 1/3 HP Pump (58 GPM)	162	24 x 24"	Ultimate Protection



Dehumidifier Options

Ventilation alone cannot provide the protection offered by a dehumidifier. Not only will it remove the bad humidity from your crawl space, but it will help your HVAC system work more efficiently and reduce the moisture that smelly mold needs to grow, improving the quality of the air entering your living areas.

Compact

70 Pint Capacity

Classic

100 Pint Capacity

- ✓ No need to drain
- ✓ Made in the USA
- ✓ 5 Year Manufacturer's Warranty

World's Fastest Drainage System

Engineers choose HydraDry® due to its high compressive strengths, inflow rate, and guaranteed results.

The HydraDry® Drainage System has been installed not only in homes, but in various commercial applications worldwide. HydraDry® has been used in synthetic and natural sports turf fields, as well as golf courses, roadways, irrigation systems, and pond liners.

HydraDry®

The specially engineered design of the HydraDry® permits high flow rates for rapid dewatering of the

soil, while effectively preventing passage of soil particles. It is made of a heavy-duty, clog resistant geotextile fabric, permanently bonded to lattice core of 75% available open space for water. The design of HydraDry® allows it to relieve hydrostatic pressure by acting as a shallow underdrain.

HydraDry® is a cost effective and superior performing replacement for the "French" drain, or other conventional "drain-tile" systems.



Life happens in your home. We believe you and your home deserve the best. Grounded in our commitment to faith and family first, our trusted team has been caring for homes just like yours since 1987. We offer effective and permanent waterproofing and foundation repair solutions that will withstand the life of your home; **this is our Helitech Promise.**



HELITECH Waterproofing & Foundation Repair

Healing Homes Since 1987

helitechonline.com | 800-246-9721

