

HYDRAWAY® WATERPROOFING SYSTEM



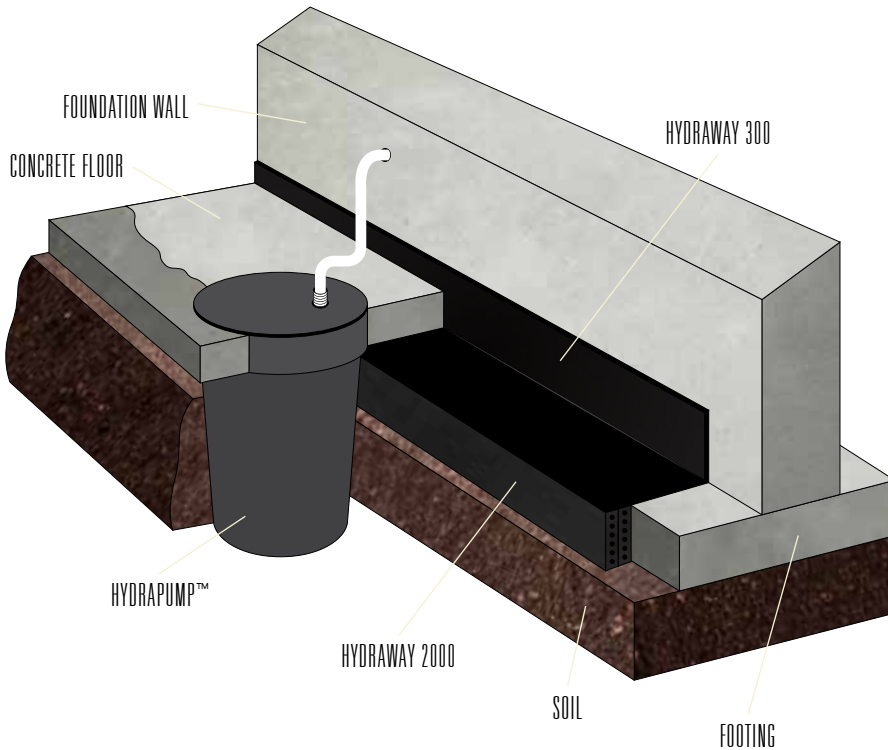
Hydraway[®]
Waterproofing System



*protect your greatest asset...
your home[®]*



THE HYDRAWAY® 2000 SYSTEM



Hydraway® 2000

Removes up to 70% more water than conventional rock and pipe “drain-tile” systems and never clogs!

Hydraway® 300

Captures water at the foundation’s weakest point — where the footing, the wall, and the floor meet.

Hydrapump™

Captures water from the Hydraway system and routes it through drain pipes to the exterior of the home.



Hydraway® 2000



Hydraway® 300



Hydrapump™



Hydrashield™

Innovative technology, proven success

Hydraway® has built a great reputation protecting investments of homeowners through innovative technology in waterproofing. Hydraway® can be installed in your basement, crawlspace, used for exterior drainage, and installed behind retaining walls.

Hydraway® will capture water before it enters your basement, relieving hydrostatic pressure and resulting in a dry, comfortable area. Utilizing a four step process, Hydraway® Drainage System protects your largest investment.

Steps taken to protect your investment

1. Our certified installer removes a small section of the floor in the impacted area. (Shown: 3000 System)



2. Small weepholes are cored beneath the floor slab to release hydrostatic pressure (block walls only).



3. The Hydraway® System, consisting of Hydraway® 2000 and Hydraway® 300, is inserted. (Shown: 2000 System)



4. Removed section of the concrete floor is repoured to original thickness, ensuring its structural integrity.



5. The sump pit and pump is installed and connected to a discharge line to carry water away from your home's foundation.



In addition to a dry basement or crawlspace, here are some other reasons to use the Hydraway® Waterproofing System

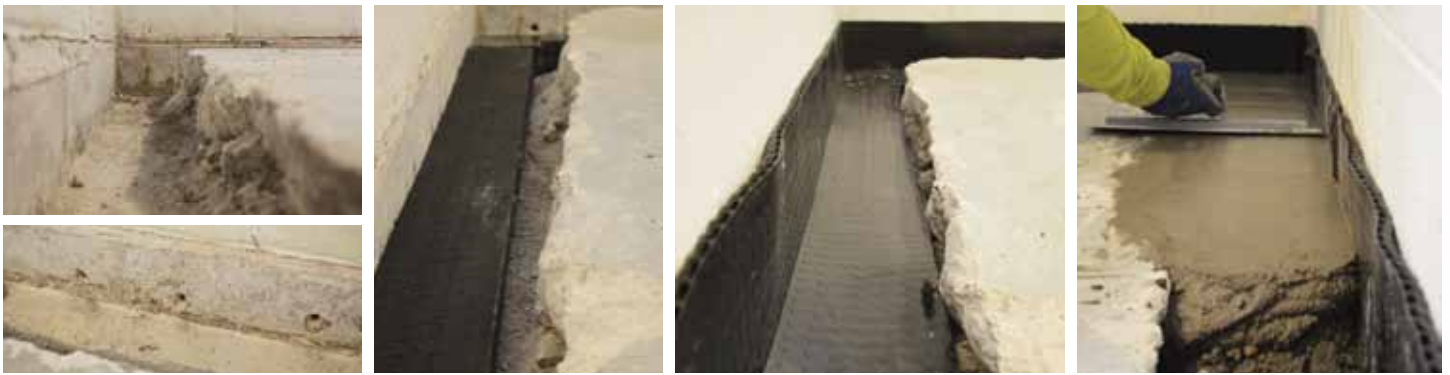
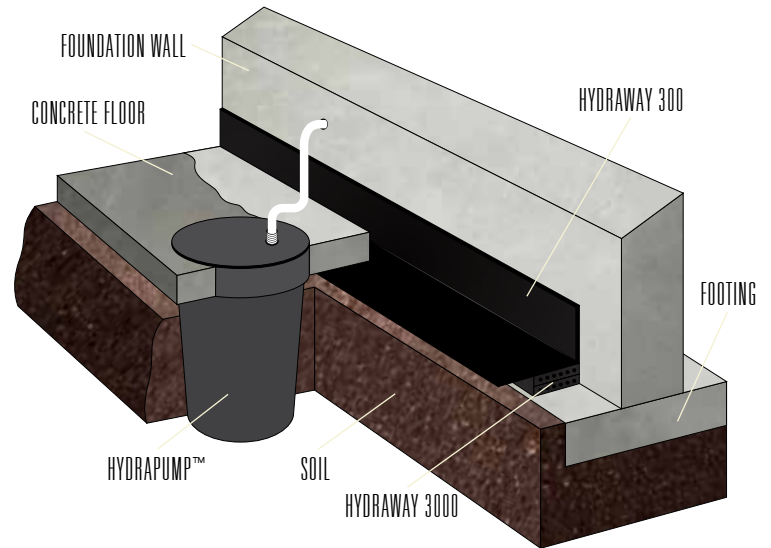
- » Proven history of successful installations worldwide — residential, commercial, and industrial.
- » Capacity to handle 70% more water than other methods — greater relief from hydrostatic pressure.
- » Polypropylene filtration insures the Hydraway® System will never clog; No known failures worldwide.
- » Fusion bonding of the filter to the core adds significant strength to withstand extreme conditions.
- » Our professional installers are certified in order to get the job done right the first time.
- » Using the Hydraway® System effectively increases the resale value of your greatest investment — your home.
- » Your basement or crawlspace will remain dry GUARANTEED!

THE HYDRAWAY® 3000 SYSTEM

Hydraway® 3000

In certain circumstances in areas with minor hydrostatic pressure and floor cracking, we offer the Hydraway® 3000 system as an economic waterproofing solution.

By installing the Hydraway® horizontally on the footing, this reduces digging and concrete removal. Using this process may cut labor costs up to 20%.



CRAWLSPACE WATERPROOFING

Hydraway® in Crawlspace

The Hydraway® System can also be used in crawlspaces to protect your home and foundation from water damage. Once a trench is dug around the perimeter of the foundation, Hydraway® is inserted among the soil and connected to each sump pit.

A black vinyl liner is often placed over the base of the crawlspace to seal off any incoming moisture to the air.



Hydrashield™ Wall Paneling System

Are you embarrassed to show anyone your dark, dirty basement? Are your basement walls water-stained or cracking? The Hydrashield™ Wall Paneling System, used in conjunction with the Hydraway® Waterproofing System, can brighten up an unsightly basement. We will transform your damp, ugly basement into a dry, comfortable, functional living space.



Hydrafreeze™ Backup Protection

Sump pump discharge lines can freeze during the winter months. Pipe terminations often become covered with snow and ice in the winter. If water cannot exit, the water will back up into the sump pit area and spell disaster for your home.

The Hydrafreeze™ system allows water to escape from a sump pump discharge line even if the pipe freezes or becomes blocked for any reason. When the main discharge line becomes frozen or blocked, the water can exit through the slits in the added Hydrafreeze™ extension. The design of Hydrafreeze will not disrupt normal drainage occurrences, but will only add protection during times of blockage.

- » Allows water to escape when discharge line is frozen
- » Prevents basement flooding in cold weather
- » Completely maintenance free
- » Comes with every Hydraway Drainage System installation, with no additional cost to you.

Benefits of Hydrashield™

- » Consists of rigid panels secured directly to your basement walls, as each panel is custom fit with matching connectors.
- » Greatly brightens up your basement.
- » Extremely durable
- » Easy to clean - simply wash off any dirt
- » Replaces the “painted on” coating which will peel and eventually allow water to penetrate through the walls.

BEFORE HYDRASHIELD



AFTER HYDRASHIELD

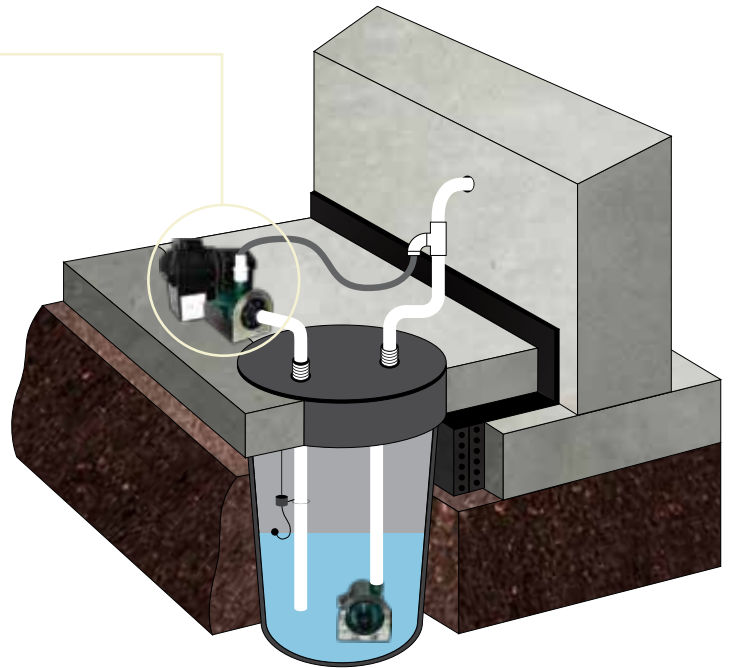


THE COMPLETE DRY SOLUTION

Sump pumps, pits, and back-ups

Once the Hydraway® System drains water from your basement or crawlspace, the water needs somewhere to go. Once installed, the Hydraway® is connected to a sump pit that is situated within the soil. Inside the sump pit contains your sump pump that pushes the water up and out of your basement through the discharge hose.

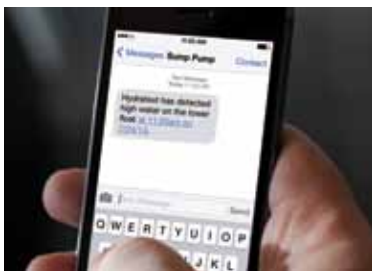
In some cases, a battery back-up system is necessary to ensure peace-of-mind in the event of a power outage or primary sump pump failure. The backup battery case and charger are positioned on the basement floor next to the backup pump. In the event of high water in the sump pit, the water level float sensor will engage the system and sound an alarm to alert the homeowner the system is operating. The water is pumped out of the pit through an additional discharge hose.



HYDRATEXT ADVANCED NOTIFICATION SYSTEM

Take action before flooding occurs

Have you ever been out of the house during a storm and worried your sump pump hasn't been activated, power failure, or even that it's running but not keeping up with the incoming water? If so, Helitech has the solution for you. We offer a state-of-the-art sump pump alarm that will send out text messages to your cell phone to alert you of potential issues. Contact your Helitech project estimator for more details.





Hydraliner™

Hydraliner™ will provide complete protection in crawlspace and basements that retain water or moisture, which can create potential rot. The exposed earth beneath your home can in turn, impact the structural integrity of the home or your health. Moisture can also breed a variety of living organisms from mold spores to insects.



BEFORE HYDRALINER



AFTER HYDRALINER



Protect your home & family's health

- » Hydraliner™ serves as a blockade to invasive animals such as termites, beetles, rodents, or snakes.
- » These invasive animals can cause damage to exposed wood, thus putting your home at greater risk.
- » Mold can generate toxins harmful to you and your family.
- » Humidity levels can range from 50%-90% in a crawlspace, which are perfect conditions for mold to grow.
- » Hydraliner™ will help prevent mold in and around your home, leaving less allergens in the air.





ENGINEERED FOR EXCELLENCE

Hydraway® 2000

The specially engineered design of the Hydraway® 2000 permits high flow rates for rapid dewatering of the soil, while effectively preventing passage of soil particles. It is made of a heavy-duty, clog resistant geotextile fabric, permanently bonded to lattice core of 75% available open space for water. The design of Hydraway® allows it to relieve hydrostatic pressure by acting as a shallow underdrain. The Hydraway® 2000 is a cost effective and superior performing replacement for the “French” drain, or other conventional “drain-tile” systems.



HYDRAWAY 2000

Hydraway® 300

Hydraway® 300 is widely used to relieve hydrostatic pressure against subsurface structures. This system provides a built-in protection board in a one-piece construction.



HYDRAWAY 300

Other applications: Retaining Walls, Exterior Foundations, Planter boxes, Landscaping, and Sub-Slab Construction.



Celebrating 30 years of Healing Homes.

Helitech Waterproofing & Foundation Repair | helitechonline.com | 800-246-9721

Bloomington-Normal 309-820-1500 • Central IL 217-522-5595 • Central MO 573-441-2254
 Evansville IN 812-297-5239 • Metro East 618-235-5595 • Moline 309-799-1260 • Peoria 309-676-5595
 Quad Cities IA 563-275-5300 • Southeast MO 573-335-4060 • Southern IL 618-993-5032
 St. Louis 314-965-4565 • Western Kentucky 270-442-4060

